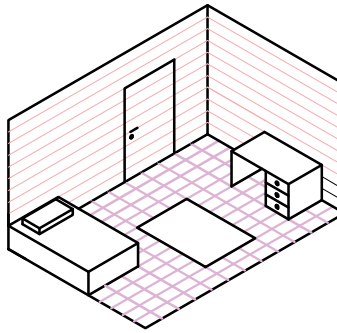
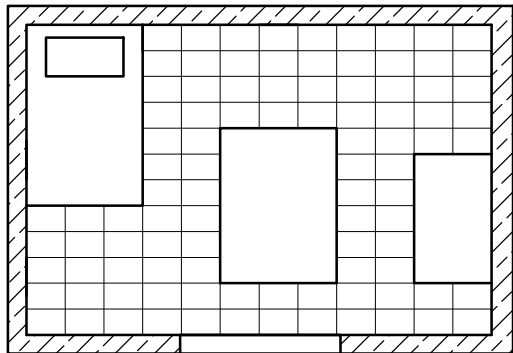
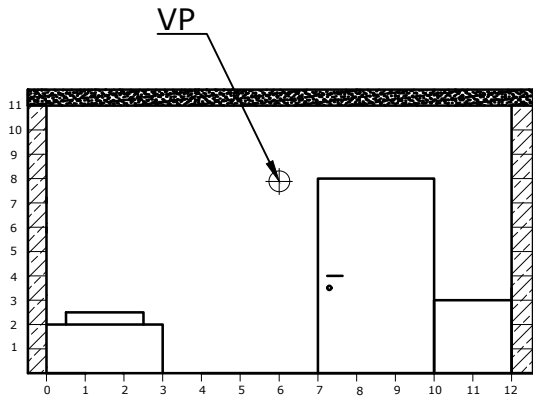


An isometric view of a bedroom is given on the right. The room is 12 units long, 12 units wide and 11 units high. The start lines of the perspective view of the room are given below.

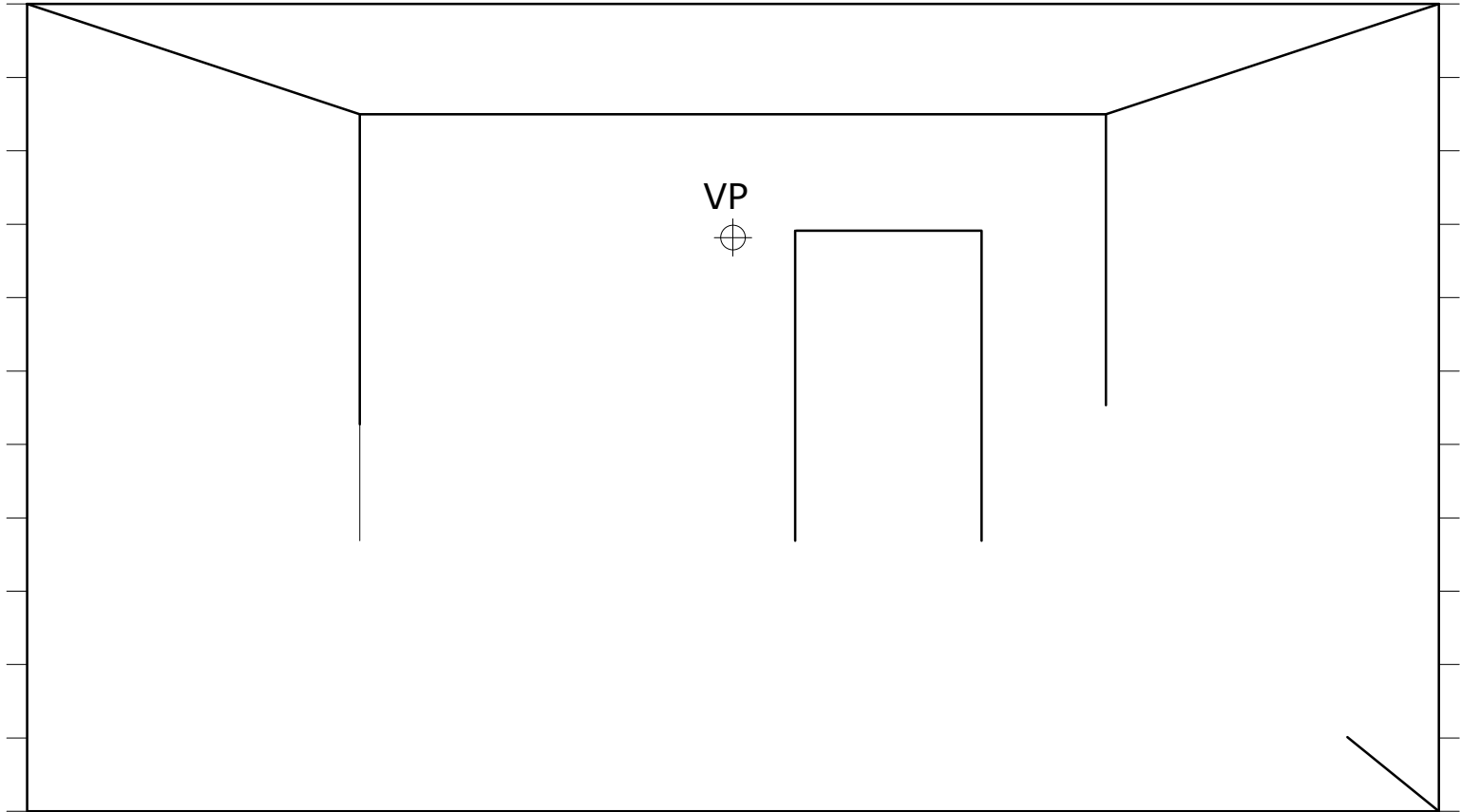


The vanishing point is marked as shown in both the front elevation and the perspective start lines.

1. Complete the construction of the floor tiles (12 tiles x 12 tiles);
2. Insert the furniture and the carpet (use the tiles and courses to determine the dimensions);
3. Line in with bold outline visible tiles, carpet and furniture.



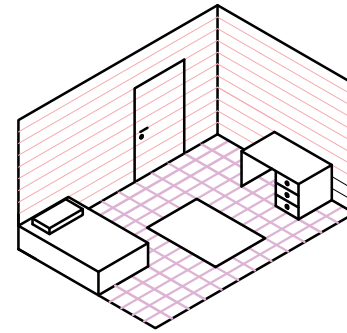
VIEWING DIRECTION



kindly donated by Mr J Spiteri

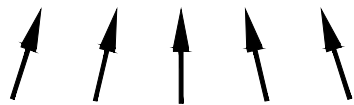
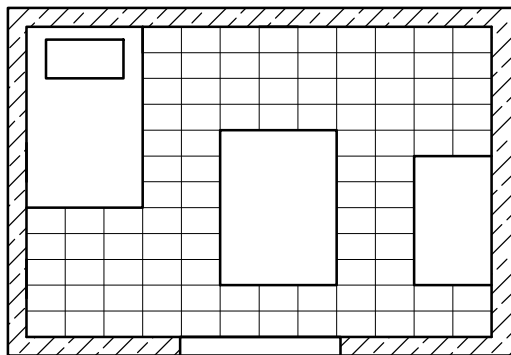
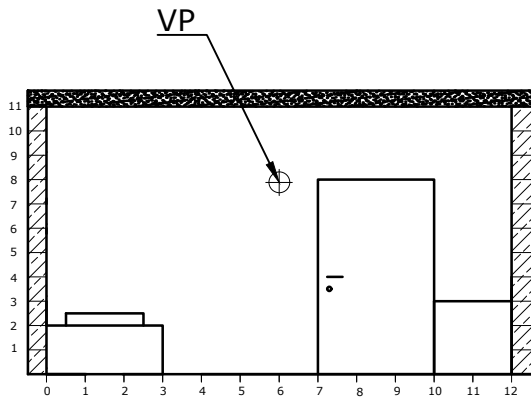
NAME:	FORM:	TITLE: SINGLE POINT PERSPECTIVE	DRG No:	DATE:
-------	-------	---------------------------------	---------	-------

An isometric view of a bedroom is given on the right. The room is 12 units long, 12 units wide and 11 units high. The start lines of the perspective view of the room are given below.

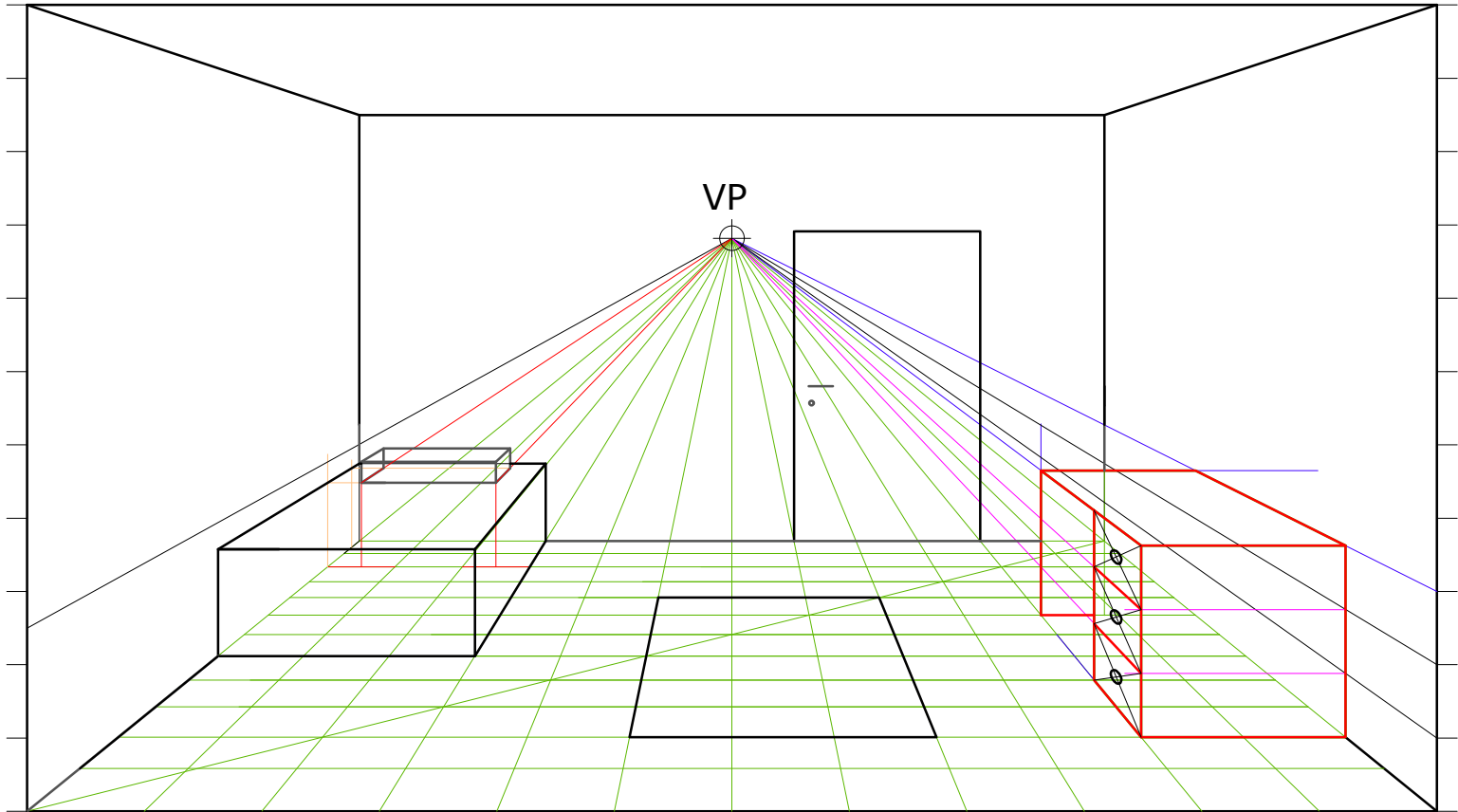


The vanishing point is marked as shown in both the front elevation and the perspective start lines.

1. Complete the construction of the floor tiles (12 tiles x 12 tiles);
2. Insert the furniture and the carpet (use the tiles and courses to determine the dimensions);
3. Line in with bold outline visible tiles, carpet and furniture.



VIEWING DIRECTION



kindly donated by Mr J Spiteri

NAME:	FORM:	TITLE: SINGLE POINT PERSPECTIVE	DRG No:	DATE:
-------	-------	---------------------------------	---------	-------